

Saleh Saeed Almontashri Est. for Contracting & Trading

**For General Contracting & Construction
Civil & Electro - Mechanical Works**



Company Profile



Index

Section	Page No.
Introduction	1
Our Philosophy	2
Technical expertise & Service Summary	3 to 21
Trading service & Summary	22 to 26
Partial List of Our Clients	27

Introduction

Saleh Saeed Almontashri Est. for Contracting is Jeddah based Civil and Electro-Mechanical Construction Est.,100% Saudi Arabian owned Establishment.

Our company has well experience in the field of Civil and Electro-Mechanical works. We do a high quality job and provide all our customers with good service, treating their property with respect. We are reliable and competitive with our pricing. It's the way we've managed to grow and develop our business over the years.

We provides Civil and Electro-Mechanical installation and maintenance works. We have well experienced qualified our own technicians.

Our Philosophy

Our Philosophy is to provide value-added construction services to our customers by creating a successful partnership with them throughout the construction process. Our pledge is to establish lasting relationships with our customers by exceeding their expectations and gaining their trust through exceptional performance by every member of the construction team.

Our aim is to perform for our customers the highest level of quality construction services at fair and competitive prices. We wish to maintain the highest levels of professionalism, integrity, honesty and fairness in our relationships with our Clients.

We will strive to develop a long term relationship with our clients, based on safety, quality, timely service and an anticipation of their needs.

Electrical services summary:

Industrial and Domestic Electrical Services.

Installation work, maintenance, inspection, testing & commissioning of the following equipment:

- PLC Programing
- DC/AC-Drives
- Panel Board manufacturing
- Variable frequency drive
- Transformers
- Substations
- Power Generators
- D.C & AC Motor , Motor Control Centers
- Mains distribution panels
- MV/ LV Switchgear Panels, ATS Panel
- Cable Trays installation
- Industrial & domestic Lighting
- Installation of Grounding & Lightning System
- L.V Cable Laying and termination
- M.V Cable Laying and termination & Jointing
- RMU termination
- Control panel wiring
- All types of industrial & domestic wiring
- Fire alarm & cctv wiring
- Fibre optic cable pulling and termination
- Low current cable pulling and termination
- UPS system, Batteries & battery chargers
- EMT pipe Installation
- Telecommunication

CAPABILITIES OF HANDLING THE TESTS

1. Hi pot testing of MV cables and Transformers.
2. Secondary Injection Testing of Protective Relays.
3. Transformers Turn Ratio Test.
4. Testing of protective devices of D.C &A.C Motors, Generators, and Transformers.
5. Insulation resistance test of cables and Windings.
6. Primary Injection Testing of Circuit Breakers.

Our operations cover a wide range of electrical installation work, maintenance, inspection and testing. We work for industrial, commercial and domestic customers. We carry out a full range of electrical installations, supplying quotes and project specifications in order to design and implement the most appropriate and cost-effective solution for your electrical needs.

PLC PROGRAMING



DC/AC-DRIVES



PANEL BOARD MANUFACTURING



VARIABLE FREQUENCY DRIVE



SUBSTATION INSTALLATION



TRANSFORMER INSTALLATION



CABLE TRAYS & EMT PIPE INSTALLATION



CONTROL PANEL WIRING



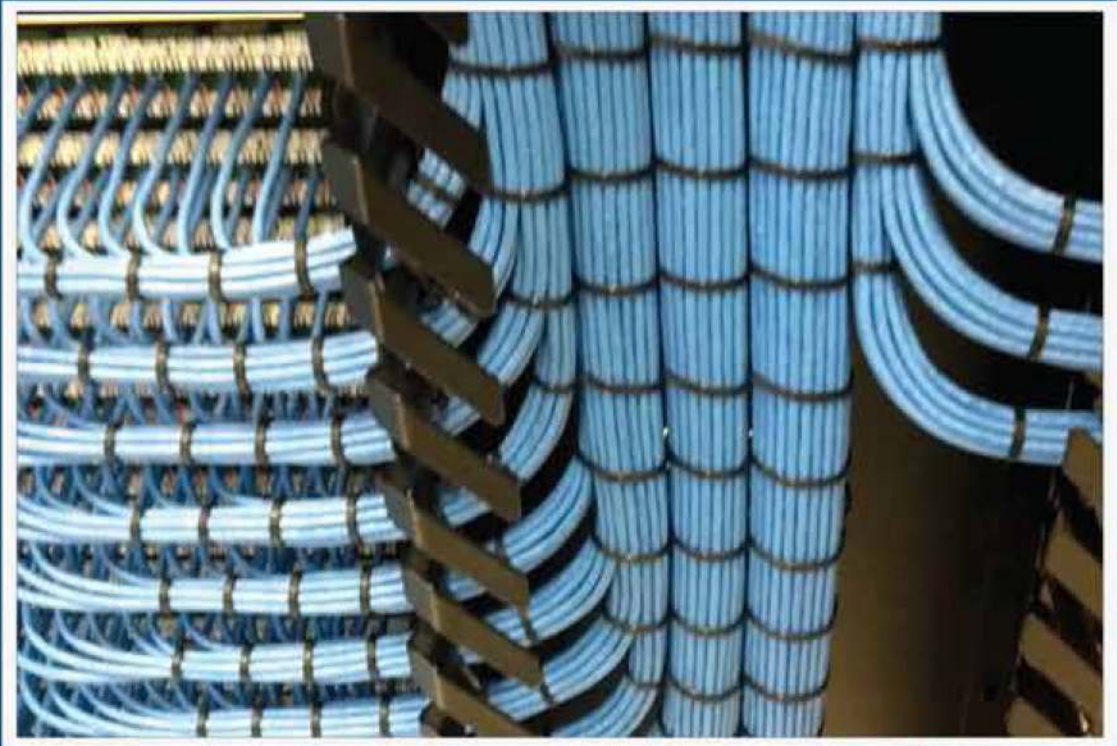
DB & CONTROL PANEL



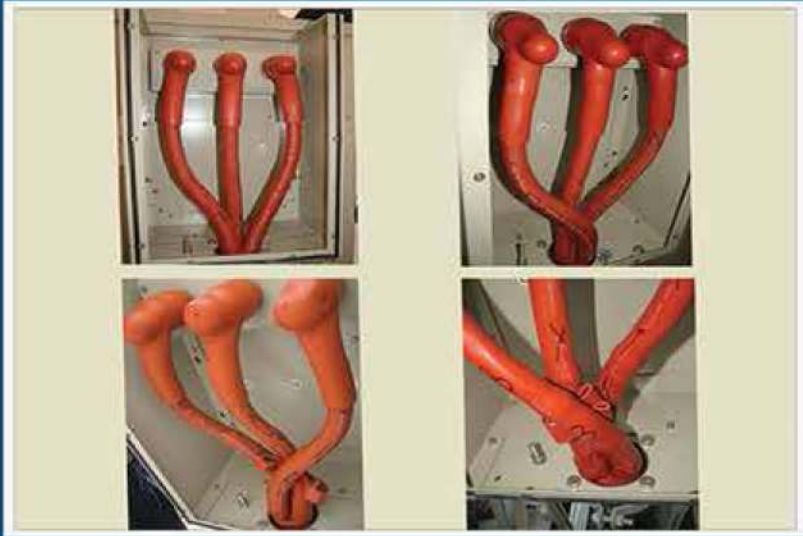
UNDERGROUND CABLE LAYING



CABLE LAYING & DRESSING



MV & LV CABLE TERMINATION



33 KV RYCHAM JOINTING



INDUSTRIAL LIGHTS INSTALATION



LED LIGHTS

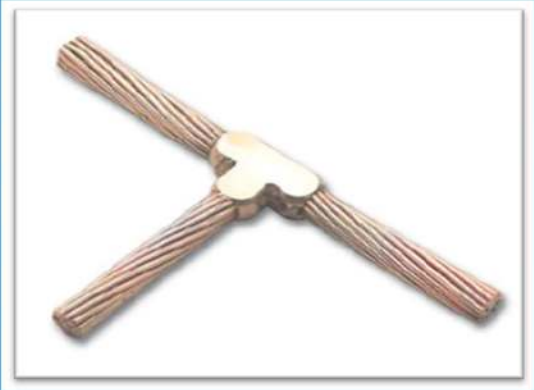
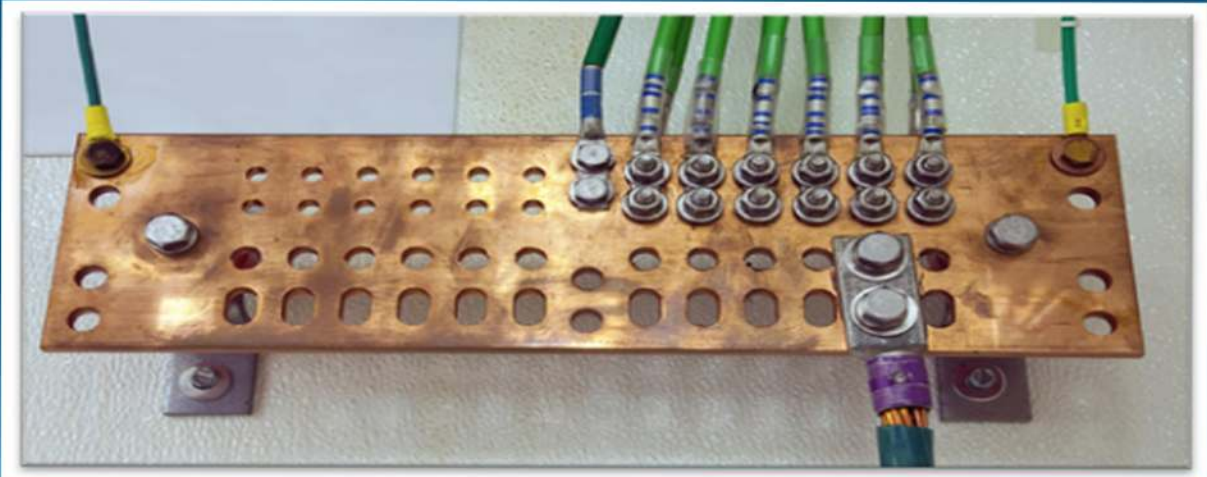


POLE LIGHTS



HIGH BAY LIGHTS

EARTHINGS





Split AC Intallation



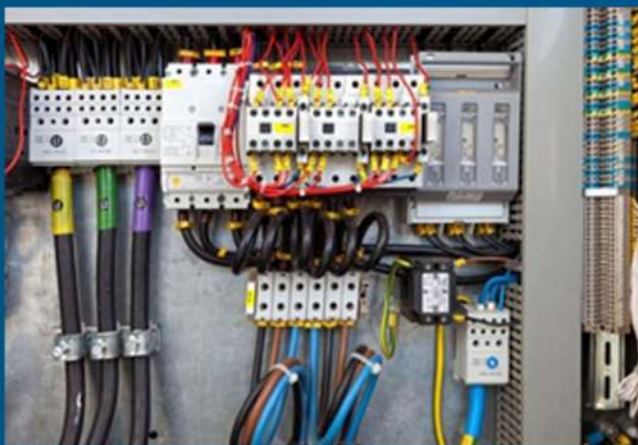
AC Package Unit Installation



Plumping Works



Plumping Works



Domestic Electrical Works



Domestic Electrical Works

OUR TESTING EQUIPMENTS



OUR TECNICAL TEAM



OUR VEHICLES

Saleh Saeed Almontashri Est. for Trading

OUR TRADING DIVISION

We are supplying all types of Civil & Electro
mechanical Materials

Mechanical Materials

GRP, GRV & GRE Pipes ,GRP, GRV & GRE Pipes Fittings & Lamination Materials



GRP, GRV & GRE Pipes



GRP, GRV & GRE Pipes Fittings



Mechanical Materials



PVC and UPVC Pipes



PVC Fittings



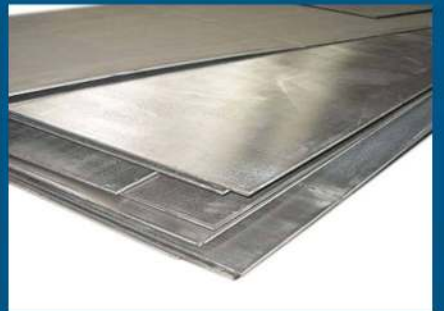
SS Pipes & Tubes



SS Plate



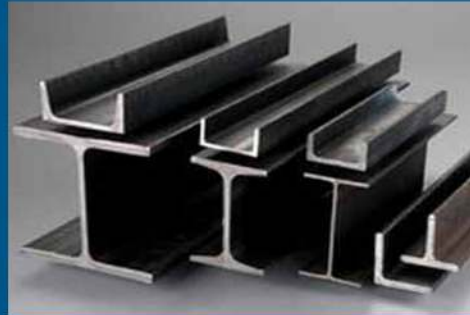
SS Fittings



MS Plate



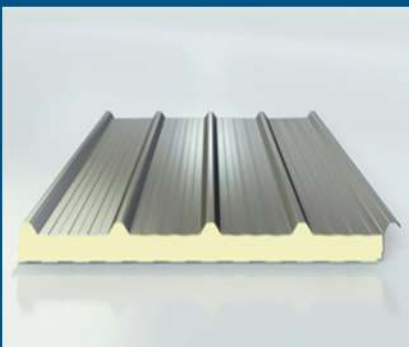
MS Pipes and Fittings



H Beams & Angles



Corrugated Sheet



Sand witch Panel



Valves

A/C materials



AC Fittings



Copper Tube



Copper Pipe



AC Duct



Pipe Insulation



Pipe Insulation



Split AC Unit



AC Package Unit

Civil Materials



Plywood



Square wood



Foam Board



Filling Board



Block Mesh



Filling Board



Pipe tube a Channel;s



Hose



Fire Hose



Rubber Sheet



Fencing Wire



Water Proofing

Electrical Materials



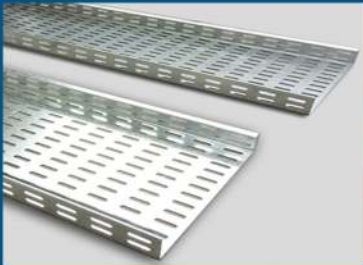
Panel Boards



Control Panel



RGS Fittings



Cable Trays



Cable Lugs



Control Cables



EMT Fittings



Cable Glands



RGS Pipes



Industrial Power Sockets



EMT Pipes



Power Cables



PVC Conduit Fittings



Liquid Tight Pipe and Fittings



Circuit Breakers



Circuit Breakers

Partial list of our Clients:

- SAUDI AMANA
- ANSALDO CALDAIE
- ALSTOM POWER ITALIA
- TECHNIP
- SEPCO III
- ANSALDO ENERGIA
- METAL ART WORKS SAUDI CO.(BINLADEN GROP)
- ARABIAN INTERNATIONAL COMPANY FOR STEEL STRUCTURE
- GLOBEL SOURCES
- EL-KHAYYAT RED BRICKS MFG
- AL TAWLEED ENERGY AND POWER SHUAIBA
- IREM ENGINEERING YANBU KSA
- AL-BAKRI SHIPPING CO.
- NASR PACKAGING COMPANY PROJECT
- AL-KHALIJI TRADING EST.
- SAUDI CABLE COMPANY
- BAHRA CABLE COMPANY
- MEPCO
- BTC

JEDDAH OFFICE

Kingdom of Saudi Arabia - Jeddah -

**VAT#300975562200003-CR 4030392163-AL Balad dlst-Jeddah
Saudi arabia-PB 22233-Jeddah 21495 Mobile 0551312937
Email info.alphatechat@gmail.com**

